



Sustaining Mobility in Rural Areas: The Need for a Rural Scope

Webinar 'Big Solutions for Small Places'
19 April 2018, 'The Digital World'

Dr. Koen Salemink
Department of Cultural Geography
Faculty of Spatial Sciences
University of Groningen - NL



Achieving a Rural Scope

- The need for a rural scope
- Important differences between urban-led and rural-led policies
 - Market rationale vs. Social innovation?



Experiences from ITRACT

- Improving TRansport and Accessibility through new Communication Technologies – Interreg 4B NSR
 - ICT applications to support rural mobility



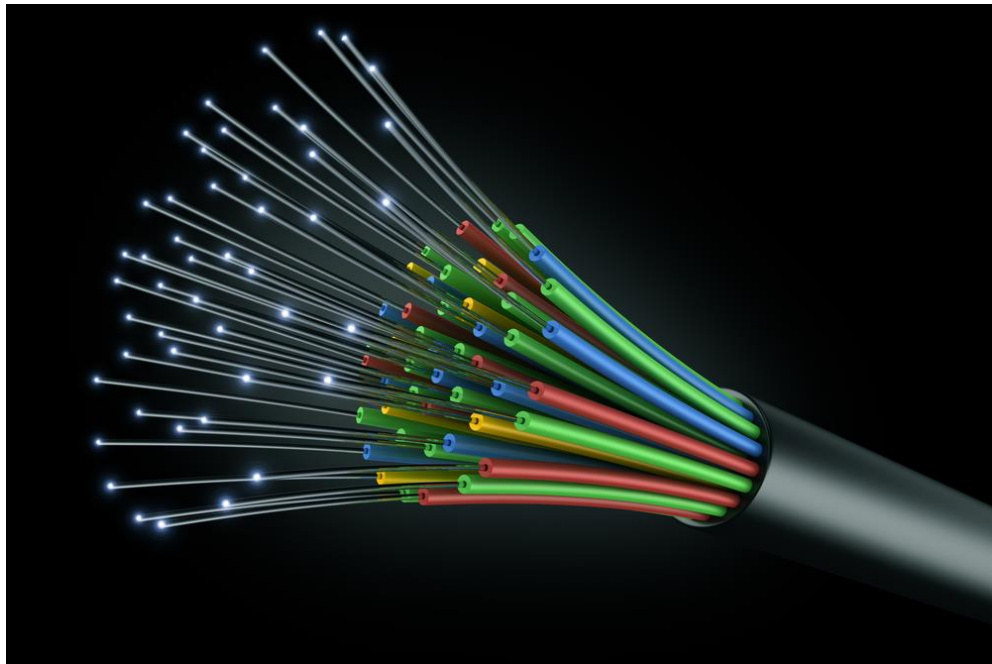


Problem

- **Digital communication infrastructure is essential in mobility strategies...**
- **...yet in rural areas, it is often inadequate**
- **Rural Penalty (Malecki, 2003; 2010)**



'Rural Penalty'



market
proac
, the
nd or
that it
und



le
nly
e





Future-proof Rural Connectivity - i

- **Digitalization as core ingredient**
- **Condition**
 - Enabling innovative mobility
- **End goal**
 - ‘...part of the digital spaces of flows’
 - **Digital Economy and Society**



Future-proof Rural Connectivity - ii

- Rural areas are on the wrong end of a digital divide
- Poor material connectivity
 - Fixed
 - Mobile
- Lower adoption rates
 - Different adoption rates

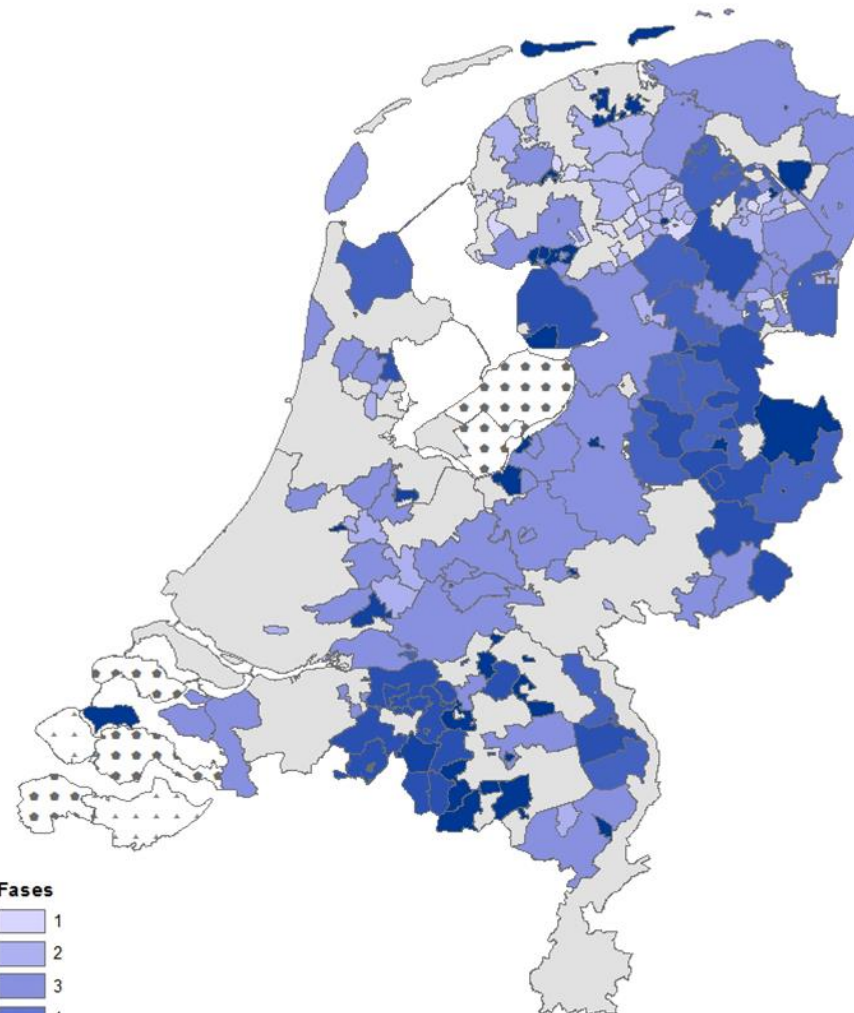


How do communiti

- Some (try to) take mat



Overzichtskaart Nederland



Fases



- - Fase 2: Straalverbinding
- Fase 8: Straalverbinding

Disclaimer: Dit kaartmateriaal is gebaseerd op de door de RUG-FRW uitgevoerde dataverzameling t/m 10 sept. 2017. De opgenomen informatie heeft betrekking op de meest recente inzichten en ontwikkelingen op het moment van schrijven.





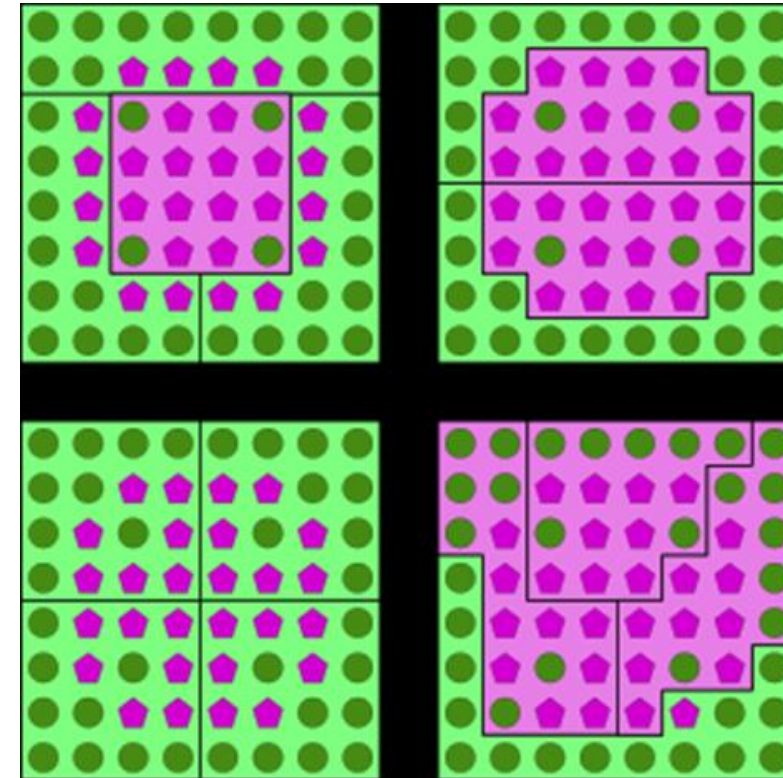
But are these solutions sustainable?

- **Citizens' initiatives, collective action, sharing economy**
-> vast regional differences
- **Time and energy from volunteers?**
- **Volunteer burnout?**



Rural Interest in Policy

- Fragmented rural interest
 - Cross-border
 - Multi-level
 - Multi-actor
- Who can take the lead?
- Who has the mandate to take decisions?



Policy Briefing from ITRACT:

https://www.researchgate.net/publication/319752095_Policy_Briefing_-_Sustaining_accessibility_and_connectivity_in_remote_rural_areas_transnational_issues_from_ITRACT



Rescaling the Rural

- **Rescaling** ‘the rural’ as a solution to fragmented rural interest
- **Geographically focused**
 - Specific (deep) rural areas and issues
- **Integral policy efforts**
 - Integrating policy domains
 - Integral measures and comprehensive approaches



Project Dynamics and Innovation

